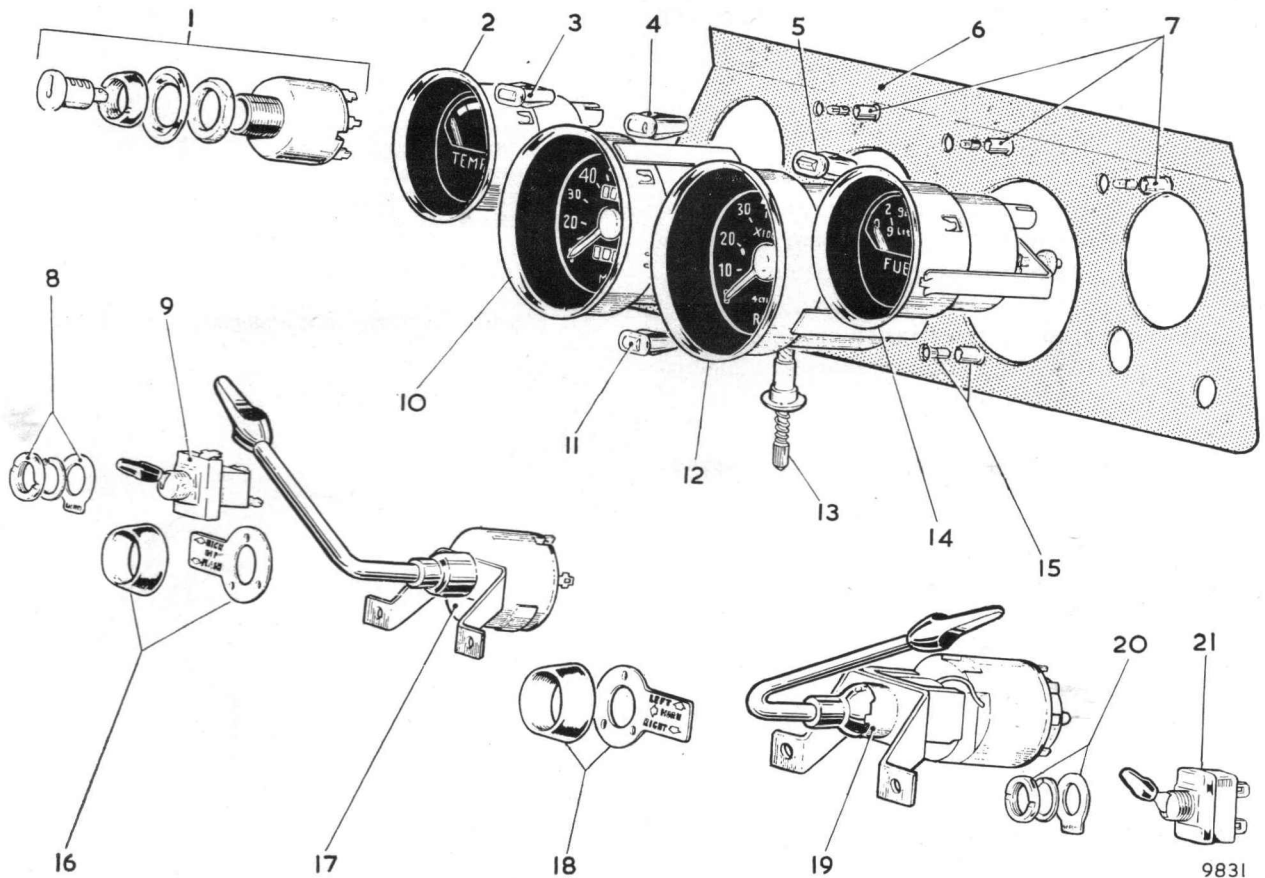


4. Remove the five screws securing the instrument panel to the fascia.
5. Make a note of the cable connections and disconnect all cables from the instruments, switches and panel lights.
6. Remove the instrument panel from the car.

To refit

Refitting is the reverse of the removal procedure.

Ensure that the earth connections to the instruments are secure and check the operation of the instruments and controls.



- | | |
|--|--|
| <ol style="list-style-type: none"> 1. IGNITION/STARTER SWITCH 2. WATER TEMPERATURE GAUGE 3. HEADLAMP WARNING LIGHT (BLUE) 4. OIL WARNING LIGHT (AMBER) 5. FLASHER WARNING LIGHT (GREEN) 6. INSTRUMENT PANEL 7. WARNING LIGHT BULB AND HOLDER 8. IDENTITY PLATE AND BEZEL (LIGHTS) 9. LIGHTING SWITCH 10. SPEEDOMETER 11. IGNITION WARNING LIGHT (RED) | <ol style="list-style-type: none"> 12. TACHOMETER (REV COUNTER) 13. SPEEDOMETER TRIP CONTROL 14. FUEL (PETROL) GAUGE 15. WARNING LIGHT BULB AND HOLDER 16. IDENTITY PLATE AND BEZEL (HEADLAMP FLASH-AND-DIP SWITCH) 17. HEADLAMP FLASH-AND-DIP SWITCH 18. IDENTITY PLATE AND BEZEL (DIRECTION INDICATOR AND HORN SWITCH) 19. DIRECTION INDICATOR AND HORN SWITCH 20. IDENTITY PLATE AND BEZEL (WIPER SWITCH) 21. WINDSCREEN WIPER SWITCH |
|--|--|

Fig. 41. Stiletto instruments and panel—exploded view