

- With the lamp illuminated in the **dipped** condition, turn the adjusting screws in the appropriate direction until the setting shown in Fig. 25c is achieved

WARNING: The 2A light units must NEVER be set under main beam conditions.

- Set the other headlamps by following the procedure described in operations 4 to 7 for the first two headlamps.

North American Specification

All four headlamps have Sealed Beam light units similar to those fitted to Home Market cars, but with the outer units arranged for right-hand dipping.

The beam-setting procedure for these units is the same as described in the foregoing paragraphs, except that the setting of the dipped beams is symmetrically opposite.

If suitable beam-setting equipment is not available, the lamps can be set by adopting the aiming board procedure, in which case the setting of the lamps should conform to the diagrams shown in Figs. 25b and 25d respectively.

European Specification

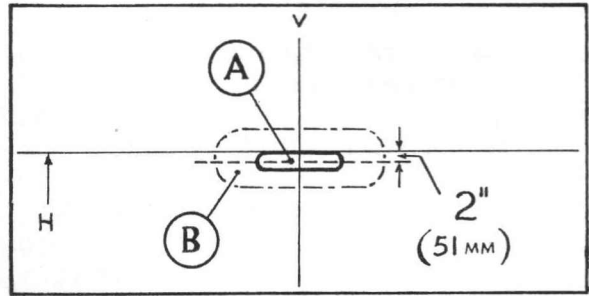
The inner headlamps have Sealed Beam light units, and the outer headlamps have detachable bulb light units.

Beam-setting in terms of degrees is the same as given under the heading "Beam Adjustment" for Home Market cars, but with the outer headlamps set for right-hand dipping.

The Sealed Beam light units can be set with the aid of a spirit-level type beam-setter, but as the outer light units do not have aiming pads on their lens, an optical type beam-setter should be used for setting all four headlamps.

If suitable beam-setting equipment is not available, the aiming board method can be adopted, in which case the setting of the lamps should conform to the diagrams shown in Figs. 25b and 25d respectively.

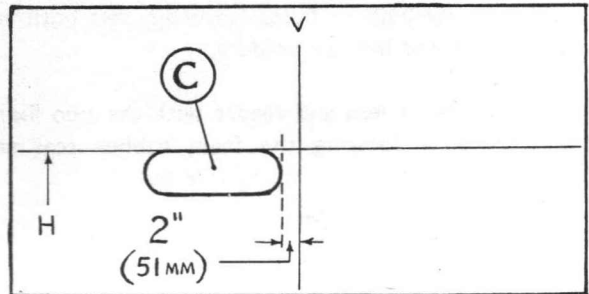
The detachable bulb in the outer lamps can be renewed by removing the light unit, disconnecting the headlamp cables and disengaging the spring securing the bulb to the reflector.



6282

- A. "HOT SPOT"
- B. HIGH INTENSITY ZONE
- H. LAMP CENTRE-LINE (HORIZONTAL)
- V. LAMP CENTRE-LINE (VERTICAL)

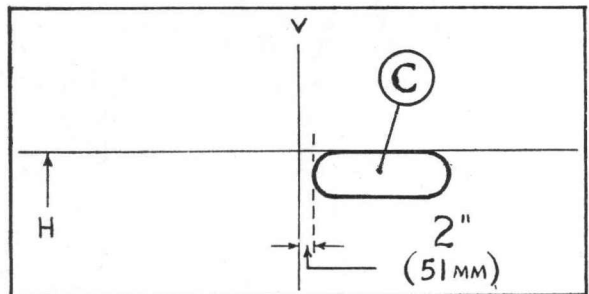
Fig. 25b. Beam-setting diagram—inner lamps



6283

- C. HIGH INTENSITY ZONE
- H. LAMP CENTRE-LINE (HORIZONTAL)
- V. LAMP CENTRE-LINE (VERTICAL)

Fig. 25c. Beam-setting diagram—outer lamps (left-hand rule of the road)



6284

- C. HIGH INTENSITY ZONE
- H. LAMP CENTRE-LINE (HORIZONTAL)
- V. LAMP CENTRE-LINE (VERTICAL)

Fig. 25d. Beam-setting diagram—outer lamps (right-hand rule of the road)